

2025



- ADHESIVES
- TILE JOINT GROUTS
- THERMAL INSULATION PRODUCTS



- FACADE RENDER
- WATERPROOFING PRODUCTS
- PRIMERS



Scan the QR code
to view our
online catalog.



KraftBau®

Yapıların Gizli Gücü

KraftBau® The Hidden Power of Structures



KraftBau[®]

Yapıların Gizli Gücü

kraftbau.com.tr



Who Are We?

KraftBau Construction Chemicals is a brand of **Varlık Mining Inc.**, headquartered in Ankara. Combining years of experience in strategic sectors such as animal feed, food, energy, foreign trade, mining, and construction, **KraftBau** was established in Döşemealtı, Antalya.

The founders of our company have played a pioneering role in every sector they have operated in. Thanks to their extensive expertise and innovative vision, they have been recognized among Türkiye's Top 500 Industrial Enterprises.

With a commitment to quality and reliability in production, **KraftBau** was founded by bringing together the experience of executing prestigious housing projects across Türkiye, particularly in Ankara. Our professional and experienced technical team, along with a wide range of high-quality products, is dedicated to adding value to the industry.

At our state-of-the-art 5,000 m² production facility, equipped with the latest technology, our expert personnel meticulously conduct R&D and quality control processes, ensuring excellence not only in production but also in innovation.

At **KraftBau**, we embrace our motto, "**The Hidden Power of Structures**", striving to combine quality, reliability, and aesthetics to become the most trusted partner in construction projects across the country.





Scan the QR code
to view our
online catalog.



KraftBau®

Yapıların Gizli Gücü

CONTENTS

2 TILE ADHESIVE MORTARS

- 4 KRAFT CLASS **KR-801 Gri**
- 6 KRAFT MASTER **KR-802 Gri**
KRAFT MASTER **KR-806 White**
- 8 KRAFT FLEX PORSELEN **KR-803 Gri**
KRAFT FLEX PORSELEN **KR-807 White**
- 10 KRAFT FLEX GRANİT **KR-804 Gri**
KRAFT FLEX GRANİT **KR-808 White**

12 PROFESSIONAL TILE ADHESIVE MORTARS

- 14 KRAFT PRO+ **KR-8000 Gri**
KRAFT PRO+ **KR-8500 White**

16 TILE GROUTS

- 18 FUGA KRAFT FLEX **KR-200**
- 20 FUGA KRAFT POOL **KR-250**

22 THERMAL INSULATION & DECORATIVE EXTERIOR SYSTEMS

- 24 MANTO KRAFT ISI YALITIM LEVHA YAPIŞTIRICI **KR-404 Gri**
- 26 MANTO KRAFT ISI YALITIM LEVHA SIVASI **KR-405 Gri**
- 28 MANTO KRAFT DECO **KR-1500 White**

30 TECHICAL PRODUCTS

- 32 KRAFT SÖVE TAMİR & YAPIŞTIRICI **KR-500 White**
- 34 TECHNO KRAFT ÇİFT BİLEŞENLİ İZOLASYON HARCı **KR-5100**
- 36 TECHNO KRAFT DOLGULU ASTAR **KR-7500**
- 37 TECHNO KRAFT BRÜT BETON ASTARI **KR-7000**
- 38 TECHNO KRAFT ÜRÜNLER



CERAMIC ADHESIVE MORTARS



Cement-Based Ceramic Adhesive Mortars

| Kod | Color | Product | Class | Description |
|--------|-------|---------------------|-------|---|
| KR-801 | Grey | KRAFT CLASS | C1T | A cement-based, single-component tile adhesive mortar with reduced slip properties, designed for ceramic and tile applications. |
| KR-802 | Grey | KRAFT MASTER | C1TE | A cement-based, single-component, polymer-enhanced, high-performance tile and ceramic adhesive with reduced slip properties and extended working time. |
| KR-806 | White | KRAFT MASTER | C1TE | |
| KR-803 | Grey | KRAFT FLEX PORSELEN | C2TE | A cement-based, high-performance ready-mix mortar with reduced slip properties and extended open time, used for bonding porcelain and granite ceramic materials, with enhanced additional features. |
| KR-807 | White | KRAFT FLEX PORSELEN | C2TE | |
| KR-804 | Grey | KRAFT FLEX GRANİT | C2TE | A cement-based, high-performance ready-mix mortar with reduced slip properties and extended open time, used for bonding porcelain and granite ceramic materials, with enhanced additional features. |
| KR-808 | White | KRAFT FLEX GRANİT | C2TE | |

Adhesive Product Standards

TS EN 12004

| Adhesive Type | Performance Class | Additional Features (if applicable) |
|------------------------|---|---|
| C: Cement-based | 1: Standard 2: Improved with additional features | F: Fast-setting T: Reduced slip E: Extended open time S1: Flexible S2: Highly flexible |

CERAMIC ADHESIVE MORTARS

KR-801



C1T

gri

25 Kg



KRAFT CLASS

SERAMİK YAPIŞTIRICI

KRAFT CLASS

Ceramic Adhesive Mortar

A cement-based, single-component tile adhesive mortar with reduced slip properties, designed for ceramic and tile applications.

Application Areas

- ▶ Suitable for both interior and exterior applications.
- ▶ Can be used on horizontal and vertical surfaces.
- ▶ Applicable on substrates such as concrete, plaster, and screed.
- ▶ Ideal for bonding small to medium-sized floor and wall ceramics with a water absorption rate above 3%.
- ▶ Provides excellent adhesion for materials such as ceramic, mosaic, decorative brick, natural stone, and travertine on both horizontal and vertical surfaces.
- ▶ Perfect for wet areas such as bathrooms and kitchens.

TS EN 12004-1: Adhesives – Tile Adhesives – Specifications, Conformity Assessment, Classification, and Marking. Complies with **C1T** classification.

C1 – Normal-setting, cement-based adhesive. **T** – Reduced slip properties.

Application Recommendations

Before applying tile over existing tile, the surface should be primed with **KRAFTBAU Filled Primer**.

For outdoor applications, it is recommended to mix and use **KRAFTBAU Acrylic Primer**.



Technical Specifications

| | |
|--|---|
| Appearance | grey powder |
| Shelf Life | unopened packaging in a dry environment: 12 months |
| Application Temperature | +5°C / +35°C |
| Water Mixing Ratio | 25 kg powder / 5 - 5.5 lt of water |
| Resting Time | 5 - 10 minutes |
| Pot Life | 4 - 4.5 hours |
| Working Time | max. 30 minutes |
| Time Required for Floor to Open to Traffic | 24 hours |
| Time Required for Grouting Application | 24 hours (on walls and floors) |
| Application Thickness | 3 - 10 mm (for single or double-sided bonding) |

The specified times are valid at a surface and ambient temperature of 20°C; at lower temperatures, the duration increases, and at higher temperatures, the duration decreases.

| Consumption | 3-5 kg/m ² |
|------------------------------------|----------------------------------|
| Valid for single-sided application | |
| Trowel Size | Consumption (kg/m ²) |
| 3 | 2-3 |
| 4 | 3-4 |
| 6 | 4-5 |
| 8 | 5-6 |
| 10 | 6-7 |

Warnings and Recommendations

- ▶ Avoid application under direct sunlight and strong wind.
- ▶ Do not apply on metal and painted surfaces.
- ▶ Not suitable for prefabricated and underfloor heating systems.
- ▶ Should not be used on wood, old painted surfaces, swimming pools, raw concrete, or gypsum panel applications.
- ▶ Do not add any foreign materials to the mixture.
- ▶ Pay attention to the amount of water added to the mortar. Do not add more water than necessary.
- ▶ Avoid application on frozen surfaces, areas with a risk of freezing within 24 hours, or areas exposed to direct sunlight and wind.
- ▶ It is recommended to wear protective gloves during application.

Advantages

- ▶ Easy to prepare and apply as a single-component adhesive.
- ▶ Its chemical properties provide high water retention, longer pot life, and extended workability.
- ▶ Does not sag.



- ▶ High bonding strength; no slippage in vertical applications.
- ▶ The white adhesive mortar prevents reflection through the surface of marble and similar materials.

Surface Preparation

- ▶ The surface to be applied should be clean, smooth, and free from paint or any materials that may impair adhesion.
- ▶ Holes and cracks in the surface should be filled 2-3 days in advance using **KRAFTBAU Repair Mortar (Fine/Coarse)**.
- ▶ If the surface is not sufficiently smooth, it should be leveled using **KRAFTBAU Self-Leveling Screed**.
- ▶ Vertical surfaces should be corrected with **KRAFTBAU Ready Plaster**.
- ▶ For applications in hot weather (when the surface temperature is above +25°C), the surface should be pre-moistened to ensure proper temperature.

Instructions For Use

To prepare **KRAFTBAU KRAFT CLASS** ceramic tile adhesive mortar, slowly mix one bag (25 kg) with 5-5.5 liters of water until it achieves a paste-like consistency using a mixer at 400-600 rpm. Allow the mixture to rest for 5 minutes, then stir again before applying it with a suitable trowel.

Choose the troweling method based on tile size, and use a rubber mallet to press the tiles onto the surface, adjusting them up, down, and side to side for proper adhesion.

Ensure that no film forms on the surface during application; if it does, re-trowel that area.

Packaging and Storage

Available in 25 kg kraft bags, shipped on pallets.

The storage period is 1 year from the production date in its original unopened packaging in a dry, frost-free environment. Once the bag is opened, it is recommended to use the product within 1 week. When not in use, ensure that the bags are tightly sealed.



CERAMIC ADHESIVE MORTARS



KR-802



C1TE

gri

25 ± 2 Kg

KR-806



C1TE

beyaz

25 ± 2 Kg

KRAFT MASTER

SERAMİK YAPIŞTIRICI

KRAFT MASTER

Ceramic Adhesive Mortar

A cement-based, single-component, polymer-enhanced, high-performance tile and ceramic adhesive with reduced slip properties and extended working time

Application Areas

- Suitable for horizontal and vertical applications in interior spaces.
- Ideal for horizontal applications in exterior areas.
- Provides excellent adhesion for ceramic, mosaic, decorative brick, natural stone, and travertine on both horizontal and vertical surfaces.
- Perfect for wet areas such as bathrooms and kitchens.
- Can be applied on substrates like concrete, plaster, and screed, ensuring strong and durable bonding.

TS EN 12004-1: Adhesives – Tile Adhesives – Specifications, Conformity Assessment, Classification, and Marking. Complies with **C1TE** classification.

C1 – Normal-setting, cement-based adhesive. **T** – Reduced slip properties. **E** – Extended open time.

Application Recommendations

Before applying tile over existing tile, the surface should be primed with **KRAFTBAU Filled Primer**.

For outdoor applications, it is recommended to mix and use **KRAFTBAU Acrylic Primer**.

Technical Specifications

| | |
|--|--|
| Appearance | grey or white powder |
| Shelf Life | unopened packaging in a dry environment: 12 months |
| Application Temperature | +5°C / +35°C |
| Water Mixing Ratio | 25 kg powder / 5 - 5.5 lt of water |
| Resting Time | 5 - 10 minutes |
| Pot Life | 4 - 4.5 hours |
| Working Time | max. 30 minutes |
| Time Required for Floor to Open to Traffic | 24 hours |
| Time Required for Grouting Application | 24 hours (on walls and floors) |
| Application Thickness | 3 - 10 mm (for single or double-sided bonding) |

The specified times are valid at a surface and ambient temperature of 20°C; at lower temperatures, the duration increases, and at higher temperatures, the duration decreases.

| Consumption | 3-5 kg/m ² |
|-------------------------------------|----------------------------------|
| Valid for single-sided application. | |
| Trowel Size | Consumption (kg/m ²) |
| 3 | 2-3 |
| 4 | 3-4 |
| 6 | 4-5 |
| 8 | 5-6 |
| 10 | 6-7 |

Warnings and Recommendations

- ▶ Avoid application under direct sunlight and strong wind.
- ▶ Do not apply on metal and painted surfaces.
- ▶ Not suitable for prefabricated and underfloor heating systems.
- ▶ Should not be used on wood, old painted surfaces, swimming pools, raw concrete, or gypsum panel applications.
- ▶ Do not add any foreign materials to the mixture.
- ▶ Pay attention to the amount of water added to the mortar. Do not add more water than necessary.
- ▶ Avoid application on frozen surfaces, areas with a risk of freezing within 24 hours, or areas exposed to direct sunlight and wind.
- ▶ It is recommended to wear protective gloves during application.

Advantages

- ▶ Easy to prepare and apply as a single-component adhesive.
- ▶ Its chemical properties provide high water retention, longer pot life, and extended workability.
- ▶ Does not sag.



- ▶ High bonding strength; no slippage in vertical applications.
- ▶ The white adhesive mortar prevents reflection through the surface of marble and similar materials.

Surface Preparation

- ▶ The surface to be applied should be clean, smooth, and free from paint or any materials that may impair adhesion.
- ▶ Holes and cracks in the surface should be filled 2-3 days in advance using **KRAFTBAU Repair Mortar (Fine/Coarse)**.
- ▶ If the surface is not sufficiently smooth, it should be leveled using **KRAFTBAU Self-Leveling Screed**.
- ▶ Vertical surfaces should be corrected with **KRAFTBAU Ready Plaster**.
- ▶ For applications in hot weather (when the surface temperature is above +25°C), the surface should be pre-moistened to ensure proper temperature.

Instructions For Use

To prepare **KRAFTBAU KRAFT MASTER** ceramic tile adhesive mortar, slowly mix one bag (25 kg) with 5-5.5 liters of water until it achieves a paste-like consistency using a mixer at 400-600 rpm. Allow the mixture to rest for 5 minutes, then stir again before applying it with a suitable trowel.

Choose the troweling method based on tile size, and use a rubber mallet to press the tiles onto the surface, adjusting them up, down, and side to side for proper adhesion.

Ensure that no film forms on the surface during application; if it does, re-trowel that area.

Packaging and Storage

Available in 25 kg kraft bags, shipped on pallets.

The storage period is 1 year from the production date in its original unopened packaging in a dry, frost-free environment. Once the bag is opened, it is recommended to use the product within 1 week. When not in use, ensure that the bags are tightly sealed.



CERAMIC ADHESIVE MORTARS



KR-803



C2TE

gri

25 ^{±%2} Kg

KR-807



C2TE

beyaz

25 ^{±%2} Kg

KRAFT FLEX PORSELEN

KRAFT FLEX PORCELAIN

Tile Adhesive Mortar (grey & white)

A cement-based, high-performance ready-mix mortar with reduced slip properties and extended open time, used for bonding porcelain and granite ceramic materials, with enhanced additional features.

TS EN 12004-1: Adhesives – Tile Adhesives – Specifications, Conformity Assessment, Classification, and Marking. Complies with **C2TE** classification.

C2 – Cement-based adhesive with improved performance and additional features. **T** – Reduced slip properties. **E** – Extended open time.

Application Areas

- ▶ Suitable for interior and exterior applications on ceramic, natural stone, granite, and porcelain tiles.
- ▶ Can be applied on concrete, plaster, and screed surfaces.
- ▶ Allows for tile-on-tile applications over existing ceramics.
- ▶ Adheres to challenging surfaces such as plaster and paint when used with **KRAFTBAU Priming Filler**.
- ▶ Ideal for terraces, balconies, and high-traffic areas.
- ▶ Ensures secure bonding of ceramic, granite, porcelain, and marble coverings on building facades up to 10 meters high.
- ▶ Suitable for exterior cladding of tiles larger than 60×60 cm up to 10 m and 45×45 cm up to 15 m.
- ▶ Perfect for commercial spaces with heavy pedestrian and load traffic, including shopping malls, business centers, hospitals, and schools.
- ▶ Delivers excellent performance on horizontal and vertical surfaces with ceramic, natural stone, travertine, decorative brick, granite, porcelain, clinker, and cotto tiles.

Application Recommendations

Before tiling over existing ceramic surfaces, the surface should be primed with **KRAFTBAU Filled Primer**.

Technical Specifications

| | |
|--|---|
| Appearance | grey or white powder |
| Shelf Life | unopened packaging in a dry environment: 12 months |
| Application Temperature | +5°C / +35°C |
| Water Mixing Ratio | 25 kg powder / 5 - 5.5 lt of water |
| Resting Time | 5 - 10 minutes |
| Pot Life | 4 - 4.5 hours |
| Working Time | max. 40 minutes |
| Time Required for Floor to Open to Traffic | 24 hours |
| Time Required for Grouting Application | 24 hours (on walls and floors) |
| Application Thickness | 3 - 10 mm (for single or double-sided bonding) |

The specified times are valid at a surface and ambient temperature of 20°C; at lower temperatures, the duration increases, and at higher temperatures, the duration decreases.

| Consumption | 3-5 kg/m ² |
|-------------------------------------|----------------------------------|
| Valid for single-sided application. | |
| Trowel Size | Consumption (kg/m ²) |
| 3 | 2-3 |
| 4 | 3-4 |
| 6 | 4-5 |
| 8 | 5-6 |
| 10 | 6-7 |

Teknik Değerler

| | |
|---|-------|
| Tensile Adhesion Strength, N/mm ² (after a minimum of 30 minutes) | ≥ 0,5 |
| Adhesion Strength, N/mm ² | |
| - In Dry Conditions | ≥ 0,5 |
| - In Wet Conditions | ≥ 0,5 |
| - In Hot Conditions | ≥ 0,5 |
| - In Cold Conditions | ≥ 0,5 |
| Slip Resistance, mm (EN 12004-2) | ≤ 0,5 |
| Reaction to Fire (EN 13501-1) | A1 |

Warnings and Recommendations

- ▶ Avoid application under direct sunlight and strong wind.
- ▶ Do not apply on metal and painted surfaces.
- ▶ Not suitable for prefabricated and underfloor heating systems.

- ▶ Should not be used on wood, old painted surfaces, swimming pools, raw concrete, or gypsum panel applications.
- ▶ Do not add any foreign materials to the mixture.
- ▶ Pay attention to the amount of water added to the mortar. Do not add more water than necessary.
- ▶ Avoid application on frozen surfaces, areas with a risk of freezing within 24 hours, or areas exposed to direct sunlight and wind.
- ▶ It is recommended to wear protective gloves during application.

Advantages

- ▶ Provides ease of use with an extended working and skinning time.
- ▶ The slippage is reduced.
- ▶ Easy to prepare and apply to the surface.
- ▶ Polymer-enhanced, which improves its overall performance.

Surface Preparation

- ▶ The surface to be applied should be clean, smooth, and free from paint or any materials that may impair adhesion.
- ▶ Holes and cracks in the surface should be filled 2-3 days in advance using **KRAFTBAU Repair Mortar (Fine/Coarse)**.
- ▶ If the surface is not sufficiently smooth, it should be leveled using **KRAFTBAU Self-Leveling Screed**.
- ▶ Vertical surfaces should be corrected with **KRAFTBAU Ready Plaster**.
- ▶ For applications in hot weather (when the surface temperature is above +25°C), the surface should be pre-moistened to ensure proper temperature.

Instructions For Use

One bag (25 kg) of **KRAFTBAU KRAFT FLEX PORCELAIN** ceramic tile adhesive mortar should be slowly added to 5-5.5 liters of water and mixed until it reaches a paste-like consistency, using a mixer at 400-600 rpm. The prepared mixture should be left to rest for 5 minutes and then stirred again before applying it to the surface with a suitable trowel. According to the size of the tile, an appropriate troweling method should be used.

The tiles are laid on the surface with the help of a rubber mallet, moving the tiles up, down, and side to side to ensure proper adhesion.

Ensure that **KRAFTBAU KRAFT FLEX PORCELAIN** does not form a film on the surface during application; if a film forms, re-trowel that section.

Packaging and Storage

Available in 25 kg kraft bags, shipped on pallets.

The storage period is 1 year from the production date in its original unopened packaging in a dry, frost-free environment. Once the bag is opened, it is recommended to use the product within 1 week. When not in use, ensure that the bags are tightly sealed.



CERAMIC ADHESIVE MORTARS



KR-804



C2TE

gri

25 ± 2 Kg

KR-808



C2TE

beyaz

25 ± 2 Kg

KRAFT FLEX GRANIT

KRAFT FLEX GRANITE

Tile Adhesive Mortar (grey & white)

A cement-based, high-performance ready-mix mortar with reduced slip properties and extended open time, used for bonding porcelain and granite ceramic materials, with enhanced additional features.

TS EN 12004-1: Adhesives – Tile Adhesives – Specifications, Conformity Assessment, Classification, and Marking. Complies with **C2TE** classification.

C2 – Cement-based adhesive with improved performance and additional features. **T** – Reduced slip properties. **E** – Extended open time.

Application Areas

- ▶ Suitable for interior and exterior applications on ceramic, natural stone, granite, and porcelain tiles.
- ▶ Can be applied on concrete, plaster, and screed surfaces.
- ▶ Allows for tile-on-tile applications over existing ceramics.
- ▶ Adheres to challenging surfaces such as plaster and paint when used with **KRAFTBAU Priming Filler**.
- ▶ Ideal for terraces, balconies, and high-traffic areas.
- ▶ Ensures secure bonding of ceramic, granite, porcelain, and marble coverings on building facades up to 10 meters high.
- ▶ Suitable for exterior cladding of tiles larger than 60×60 cm up to 10 m and 45×45 cm up to 15 m.
- ▶ Perfect for commercial spaces with heavy pedestrian and load traffic, including shopping malls, business centers, hospitals, and schools.
- ▶ Delivers excellent performance on horizontal and vertical surfaces with ceramic, natural stone, travertine, decorative brick, granite, porcelain, clinker, and cotto tiles.

Application Recommendations

Before tiling over existing ceramic surfaces, the surface should be primed with **KRAFTBAU Filled Primer**.

Technical Specifications

| | |
|--|---|
| Appearance | grey or white powder |
| Shelf Life | unopened packaging in a dry environment: 12 months |
| Application Temperature | +5°C / +35°C |
| Water Mixing Ratio | 25 kg powder / 5 - 5.5 lt of water |
| Resting Time | 5 - 10 minutes |
| Pot Life | 4 - 4.5 hours |
| Working Time | max. 40 minutes |
| Time Required for Floor to Open to Traffic | 24 hours |
| Time Required for Grouting Application | 24 hours (on walls and floors) |
| Application Thickness | 3 - 10 mm (for single or double-sided bonding) |

The specified times are valid at a surface and ambient temperature of 20°C; at lower temperatures, the duration increases, and at higher temperatures, the duration decreases.

| Consumption | 3-5 kg/m ² |
|-------------------------------------|----------------------------------|
| Valid for single-sided application. | |
| Trowel Size | Consumption (kg/m ²) |
| 3 | 2-3 |
| 4 | 3-4 |
| 6 | 4-5 |
| 8 | 5-6 |
| 10 | 6-7 |

Teknik Değerler

| | |
|---|-------|
| Tensile Adhesion Strength, N/mm ² (after a minimum of 30 minutes) | ≥ 0,5 |
| Adhesion Strength, N/mm ² | |
| - In Dry Conditions | ≥ 0,5 |
| - In Wet Conditions | ≥ 0,5 |
| - In Hot Conditions | ≥ 0,5 |
| - In Cold Conditions | ≥ 0,5 |
| Slip Resistance, mm (EN 12004-2) | ≤ 0,5 |
| Reaction to Fire (EN 13501-1) | A1 |

Warnings and Recommendations

- ▶ Avoid application under direct sunlight and strong wind.
- ▶ Do not apply on metal and painted surfaces.
- ▶ Not suitable for prefabricated and underfloor heating systems.

- ▶ Should not be used on wood, old painted surfaces, swimming pools, raw concrete, or gypsum panel applications.
- ▶ Do not add any foreign materials to the mixture.
- ▶ Pay attention to the amount of water added to the mortar. Do not add more water than necessary.
- ▶ Avoid application on frozen surfaces, areas with a risk of freezing within 24 hours, or areas exposed to direct sunlight and wind.
- ▶ It is recommended to wear protective gloves during application.

Advantages

- ▶ Provides ease of use with an extended working and skinning time.
- ▶ The slippage is reduced.
- ▶ Easy to prepare and apply to the surface.
- ▶ Polymer-enhanced, which improves its overall performance.

Surface Preparation

- ▶ The surface to be applied should be clean, smooth, and free from paint or any materials that may impair adhesion.
- ▶ Holes and cracks in the surface should be filled 2-3 days in advance using **KRAFTBAU Repair Mortar (Fine/Coarse)**.
- ▶ If the surface is not sufficiently smooth, it should be leveled using **KRAFTBAU Self-Leveling Screed**.
- ▶ Vertical surfaces should be corrected with **KRAFTBAU Ready Plaster**.
- ▶ For applications in hot weather (when the surface temperature is above +25°C), the surface should be pre-moistened to ensure proper temperature.

Instructions For Use

One bag (25 kg) of **KRAFTBAU KRAFT FLEX GRANITE** ceramic tile adhesive mortar should be slowly added to 5-5.5 liters of water and mixed until it reaches a paste-like consistency, using a mixer at 400-600 rpm. The prepared mixture should be left to rest for 5 minutes and then stirred again before applying it to the surface with a suitable trowel. According to the size of the tile, an appropriate troweling method should be used.

The tiles are laid on the surface with the help of a rubber mallet, moving the tiles up, down, and side to side to ensure proper adhesion.

Ensure that **KRAFTBAU KRAFT FLEX GRANITE** does not form a film on the surface during application; if a film forms, re-trowel that section.

Packaging and Storage

Available in 25 kg kraft bags, shipped on pallets.

The storage period is 1 year from the production date in its original unopened packaging in a dry, frost-free environment. Once the bag is opened, it is recommended to use the product within 1 week. When not in use, ensure that the bags are tightly sealed.





PROFESSIONAL CERAMIC ADHESIVE MORTARS



Cement-Based Professional Ceramic Adhesive Mortars

| Kod | Renk | Ürün | Sınıf | Açıklama |
|---------|-------|------------|--------|--|
| KR-8000 | Grey | KRAFT PRO+ | C2TES1 | High-performance, C2TES1-class, cement-based, single-component, polymer-modified adhesive, offering flexibility, reduced slip, extended open time, and high elasticity (S1-class). |
| KR-8500 | White | KRAFT PRO+ | C2TES1 | |

Adhesive Product Standards

TS EN 12004

| Adhesive Type | Performance Class | Additional Features (if applicable) |
|------------------------|---|---|
| C: Cement-based | 1: Standard 2: Improved with additional features | F: Fast-setting T: Reduced slip E: Extended open time S1: Flexible S2: Highly flexible |

PROFESSIONAL CERAMIC ADHESIVE MORTARS



KR-8000



C2TES1

gri

25 ± 2 Kg

KR-8500



C2TES1

beyaz

25 ± 2 Kg

KRAFT PRO+

KRAFT PRO+

Tile Adhesive Mortar (grey & white)

High-performance, C2TES1-class, cement-based, single-component, polymer-modified adhesive, offering flexibility, reduced slip, extended open time, and high elasticity (S1-class).

TS EN 12004-1: High-performance, C2TES1-class, cement-based, polymer-modified, flexible ceramic adhesive.

C2 – Normal-setting, cement-based adhesive. **T** – Reduced slip properties. **E** – Extended open time. **S1** – Elastic.

Application Areas

- ▶ Indoor horizontal and vertical applications
- ▶ Outdoor horizontal applications.
- ▶ Terraces, swimming pools, and underfloor heating systems.
- ▶ Areas exposed to temperature fluctuations, frost, and heavy traffic.
- ▶ Tiling over old ceramic surfaces.
- ▶ Concrete, screed, plaster, and gypsum surfaces (after applying **KRAFTBAU Primer**).
- ▶ Bonding ceramic, granite, porcelain, and marble tiles.
- ▶ Challenging surfaces such as plaster or painted substrates.
- ▶ Wet areas like pools and water tanks.
- ▶ Temperature-sensitive environments (cold storage, oven exteriors).
- ▶ High-traffic spaces like shopping malls, hospitals, and schools.

Technical Specifications

| | |
|--|--|
| Appearance | grey and white powder |
| Shelf Life | unopened packaging in a dry environment: 12 months |
| Application Temperature | +5°C / +35°C |
| Water Mixing Ratio | 25 kg powder / 5 - 5.5 lt of water |
| Resting Time | 5 - 10 minutes |
| Pot Life | 4 - 4.5 hours |
| Working Time | max. 40 minutes |
| Time Required for Floor to Open to Traffic | 24 hours |
| Time Required for Grouting Application | 24 hours (on walls and floors) |
| Application Thickness | 3 - 10 mm (for single or double-sided bonding) |

The specified times are valid at a surface and ambient temperature of 20°C; at lower temperatures, the duration increases, and at higher temperatures, the duration decreases.

| Consumption | 3-5 kg/m ² |
|-------------------------------------|----------------------------------|
| Valid for single-sided application. | |
| Trowel Size | Consumption (kg/m ²) |
| 3 | 2-3 |
| 4 | 3-4 |
| 6 | 4-5 |
| 8 | 5-6 |
| 10 | 6-7 |

| Tensile Adhesion Strength, N/mm ² | |
|--|-------|
| Initial | ≥ 1,0 |
| After immersion in water | ≥ 1,0 |
| After heat aging | ≥ 1,0 |
| After freeze-thaw cycles | ≥ 1,0 |

Advantages

- ▶ Exhibits high adhesion strength.
- ▶ With S1 class flexibility, it withstands surface tensions caused by sudden temperature changes.
- ▶ Does not slip during vertical surface applications.
- ▶ Has a long working time.
- ▶ Easy to trowel.

Surface Preparation

- ▶ The surface to be applied should be clean, smooth, and free from paint or any materials that may impair adhesion.



- ▶ Holes and cracks in the surface should be filled 2-3 days in advance using **KRAFTBAU Repair Mortar (Fine/Coarse)**.
- ▶ If the surface is not sufficiently smooth, it should be leveled using **KRAFTBAU Self-Leveling Screed**.
- ▶ Vertical surfaces should be corrected with **KRAFTBAU Ready Plaster**.
- ▶ For applications in hot weather (when the surface temperature is above +25°C), the surface should be pre-moistened to ensure proper temperature.

Instructions For Use

One bag (25 kg) of **KRAFTBAU KRAFT PRO+** ceramic and tile adhesive should be slowly added to 5-5.5 liters of water and mixed until it reaches a paste-like consistency, using a mixer at 400-600 rpm. The prepared mixture should be left to rest for 5 minutes and then stirred again before applying it to the surface with a suitable trowel. According to the size of the tile, an appropriate troweling method should be used.

The tiles are laid on the surface with the help of a rubber mallet, moving the tiles up, down, and side to side to ensure proper adhesion.

Ensure that **KRAFTBAU KRAFT PRO+** does not form a film on the surface during application; if a film forms, re-trowel that section.

Packaging and Storage

Available in 25 kg kraft bags, shipped on pallets.

The storage period is 1 year from the production date in its original unopened packaging in a dry, frost-free environment. Once the bag is opened, it is recommended to use the product within 1 week. When not in use, ensure that the bags are tightly sealed.





TILE GROUTS



Cement-Based Grout Filler

| Kod | Product | Class | Description |
|--------|-----------------|-------|---|
| KR-200 | FUGA KRAFT FLEX | CG2A | A cement-based, high-performance, single-component grout, easy to apply, used for joints between 1 - 6 mm wide. It is flexible, highly resistant to cracking, and abrasion-resistant. |
| KR-250 | FUGA KRAFT POOL | CG2WA | High-performance, cement-based grout with silicone additives, specially developed for pool applications. Suitable for applications with a thickness of 1 - 6 mm. |

Derz Dolgu Ürün Standartları

TS EN 13888

| Grout Structure | Performance Class (if applicable) |
|------------------------------------|---|
| CG: Cement-Based Tile Grout | CG1: Standard Cement-Based Tile Grout |
| | CG2A: Enhanced Cement-Based Tile Grout with High Abrasion Resistance |
| | CG2W: Enhanced Cement-Based Tile Grout with Reduced Water Absorption |
| | CG2WA: Enhanced Cement-Based Tile Grout with Reduced Water Absorption and High Abrasion Resistance |

TILE GROUTS

KR-200



20 ± 2 Kg



10 ± 2 Kg



5 ± 2 Kg



FUGA KRAFT FLEX

FUGA KRAFT FLEX

Tile Grout Filler

A cement-based, high-performance, single-component grout, easy to apply, used for joints between 1 - 6 mm wide. It is flexible, highly resistant to cracking, and abrasion-resistant.

TS EN 13888-1:2022 Tile Grout Filler – Compliance assessment, classification, and performance. Conforms to **CG2A** classification.

CG2: Cement-based tile grout with enhanced properties. **A:** Improved abrasion resistance.

Application Areas

It is used to fill the grout joints of ceramic and tile coatings on horizontal and vertical surfaces, indoors and outdoors, in dry and moderately damp environments.

Advantages

Easy to apply, provides a smooth appearance. Suitable for both indoor and outdoor applications. Can be easily used on horizontal and vertical surfaces.

Surface Preparation

Ensure that the adhesive under the tiles has fully cured. Clean any dust, wood chips, and cement residues from the grout gaps. If necessary, moisten the grout joints with water.

Mixing & Application

Pour water into the mixing container first, then add **FUGA KRAFT FLEX** (6 - 7 liters of water per 20 kg bag). Mix until smooth, without lumps, and let it rest for 5 minutes. The grout is applied to the joints with a rubber spatula. After approximately 30 minutes, clean the surface with a damp sponge. The sponge should be

Consumption: Consumption Amount, g/m²

| Tile Size, cm | Joint Gap, mm | | | | |
|---------------|---------------|-----|-----|-----|-----|
| | 2 | 3 | 4 | 5 | 6 |
| 15 x 60 | 160 | 240 | 320 | 400 | 480 |
| 33 x 33 | 150 | 220 | 300 | 370 | 440 |
| 40 x 40 | 150 | 215 | 305 | 365 | 425 |
| 30 x 60 | 150 | 210 | 300 | 350 | 410 |
| 45 x 45 | 145 | 215 | 280 | 335 | 395 |
| 60 x 60 | 130 | 195 | 265 | 325 | 385 |
| 40 x 120 | 125 | 195 | 255 | 315 | 375 |
| 60 x 120 | 105 | 165 | 230 | 295 | 360 |
| 100 x 100 | 95 | 150 | 205 | 260 | 315 |

cleaned frequently. For optimal results, the applied surface should be moistened after 1 day.

Warnings

Do not add foreign materials (lime, cement, gypsum, etc.) to the prepared mixture. Do not reuse grout that has exceeded its working time. Wait at least 24 hours after tile installation before applying the grout. Apply between +5°C and +35°C. Do not apply to frozen surfaces or in direct sunlight. Avoid inhaling the product; in case of contact with eyes, rinse with plenty of water.

Technical Specifications

| | |
|---|--------|
| Usage Time, hours | ≤ 1,5 |
| Water Absorption, after 30 min, g (EN 12808-5) | ≤ 5 |
| Water Absorption, after 240 min, g (EN 12808-5) | ≤ 10 |
| Shrinkage, mm/m (EN 12808-4) | ≤ 3 |
| Flexural Strength after Dry Storage, N/mm ² (EN 12808-3) | ≥ 2,5 |
| Flexural Strength after Freeze-Thaw Cycles, N/mm ² (EN 12808-3) | ≥ 2,5 |
| Compressive Strength after Dry Storage, N/mm ² (EN 12808-3) | ≥ 15 |
| Compressive Strength after Freeze-Thaw Cycles, N/mm ² (EN 12808-3) | ≥ 15 |
| Abrasion Resistance, mm ² (EN 12808-2) | ≥ 2000 |

Packaging and Storage

It is available in 5 kg and 10 kg polyethylene bags, and 20 kg kraft bags on pallets. Store the product in a dry place, free from the risk of freezing, in its original packaging for up to 6 months. Once opened, it is recommended to use the product within 1 week. Keep the packaging tightly sealed when not in use.



Grout Color Chart

| | | |
|--------|--|--------------|
| KR-200 | | White |
| KR-201 | | Misty Grey |
| KR-202 | | Silver Grey |
| KR-203 | | Rose |
| KR-204 | | Roman Beige |
| KR-205 | | Sandy Beige |
| KR-206 | | Steppe |
| KR-207 | | Anatolia |
| KR-208 | | Ivory |
| KR-209 | | Mocha |
| KR-210 | | Venice Red |
| KR-211 | | Earthy Brown |
| KR-212 | | Antalya Blue |
| KR-213 | | Ashy Caramel |
| KR-214 | | Alaçatı |
| KR-215 | | Basalt Grey |
| KR-216 | | Chestnut |
| KR-217 | | Anthracite |
| KR-218 | | Black |

The grout filler colors shown in the catalog may not exactly match the actual product colors. Due to differences in printing technology and display devices, slight tonal variations may occur. For accurate color selection, we recommend checking the product sample or color chart.

TILE GROUTS

KR-250



20 ± 2 Kg



10 ± 2 Kg



5 ± 2 Kg



FUGA KRAFT POOL

FUGA KRAFT POOL

Tile Grout Filler

High-performance, cement-based grout with silicone additives, specially developed for pool applications. Suitable for applications with a thickness of 1-6 mm.

TS EN 13888-1:2022 Tile Grout Filler – Compliance assessment, classification, and performance. Conforms to **CG2WA** classification.

CG2: Cement-based tile grout with enhanced properties. **A:** Improved abrasion resistance. **W:** Reduced water absorption.

Application Areas

Designed for use in areas with high humidity like pools, saunas, and thermal baths, as well as outdoor areas such as terraces, balconies, and gardens. It is also suitable for ceramic, granite, natural stone, porcelain, and marble joints. Ideal for underfloor heating systems, high-traffic areas, cold storage rooms, and ceramic renovation applications.

Advantages

Elastic structure. Excellent performance in pool applications. Suitable for tile-on-tile applications. Resistant to mold and mildew. Provides a smooth, glossy finish. High abrasion resistance and water repellency.

Surface Preparation

Ensure the adhesive under the tiles is fully dried. Remove dust and construction residues from the joints and moisten them with water if necessary.

Mixing & Application

Add water first, then **FUGA KRAFT POOL** (6-7 liters of water per 20 kg) and mix until lump-free. Wait 5 minutes, then mix again. Apply the mixture with a rubber spatula. Clean the surface with a damp spon-

Consumption: Consumption Amount, g/m²

| Tile Size, cm | Joint Gap, mm | | | | |
|---------------|---------------|-----|-----|-----|-----|
| | 2 | 3 | 4 | 5 | 6 |
| 15 x 60 | 160 | 240 | 320 | 400 | 480 |
| 33 x 33 | 150 | 220 | 300 | 370 | 440 |
| 40 x 40 | 150 | 215 | 305 | 365 | 425 |
| 30 x 60 | 150 | 210 | 300 | 350 | 410 |
| 45 x 45 | 145 | 215 | 280 | 335 | 395 |
| 60 x 60 | 130 | 195 | 265 | 325 | 385 |
| 40 x 120 | 125 | 195 | 255 | 315 | 375 |
| 60 x 120 | 105 | 165 | 230 | 295 | 360 |
| 100 x 100 | 95 | 150 | 205 | 260 | 315 |

ge about 30 minutes after application. Clean the sponge frequently. Once the grout has dried, wipe off any residue with a dry cloth. The surface should be moistened after 1 day for optimal performance.

Warnings

Do not add foreign materials (lime, cement, gypsum, etc.) to the prepared mixture. Do not reuse grout that has exceeded its working time. Wait at least 24 hours after tile installation before applying the grout. Apply between +5°C and +35°C. Do not apply to frozen surfaces or in direct sunlight. Avoid inhaling the product; in case of contact with eyes, rinse with plenty of water.

Technical Specifications

| | |
|---|--------|
| Usage Time, hours | ≤ 2 |
| Water Absorption, after 30 min, g (EN 12808-5) | ≤ 2 |
| Water Absorption, after 240 min, g (EN 12808-5) | ≤ 5 |
| Shrinkage, mm/m (EN 12808-4) | ≤ 3 |
| Flexural Strength after Dry Storage, N/mm ² (EN 12808-3) | ≥ 2,5 |
| Flexural Strength after Freeze-Thaw Cycles, N/mm ² (EN 12808-3) | ≥ 2,5 |
| Compressive Strength after Dry Storage, N/mm ² (EN 12808-3) | ≥ 15 |
| Compressive Strength after Freeze-Thaw Cycles, N/mm ² (EN 12808-3) | ≥ 15 |
| Abrasion Resistance, mm ² (EN 12808-2) | ≥ 1000 |

Packaging and Storage

It is available in 5 kg and 10 kg polyethylene bags, and 20 kg kraft bags on pallets. Store the product in a dry place, free from the risk of freezing, in its original packaging for up to 6 months. Once opened, it is recommended to use the product within 1 week. Keep the packaging tightly sealed when not in use.



Grout Color Chart

| | | |
|--------|--|--------------|
| KR-200 | | White |
| KR-201 | | Misty Grey |
| KR-202 | | Silver Grey |
| KR-203 | | Rose |
| KR-204 | | Roman Beige |
| KR-205 | | Sandy Beige |
| KR-206 | | Steppe |
| KR-207 | | Anatolia |
| KR-208 | | Ivory |
| KR-209 | | Mocha |
| KR-210 | | Venice Red |
| KR-211 | | Earthy Brown |
| KR-212 | | Antalya Blue |
| KR-213 | | Ashy Caramel |
| KR-214 | | Alaçatı |
| KR-215 | | Basalt Grey |
| KR-216 | | Chestnut |
| KR-217 | | Anthracite |
| KR-218 | | Black |

The grout filler colors shown in the catalog may not exactly match the actual product colors. Due to differences in printing technology and display devices, slight tonal variations may occur. For accurate color selection, we recommend checking the product sample or color chart.



THERMAL INSULATION & DECORATIVE EXTERIOR SYSTEMS



Cement-Based Exterior Coating and Insulation Systems

| Kod | Colour | Product | Description |
|---------|--------|---|--|
| KR-404 | Grey | MANTO KRAFT ISI YALITIM LEVHA YAPIŞTIRICI | Cement-based, polymer-modified, high-performance, and flexible adhesive mortar specially formulated for thermal insulation boards. |
| KR-405 | Grey | MANTO KRAFT ISI YALITIM LEVHA SIVASI | Cement-based, polymer-modified, water-repellent external thermal insulation render compliant with TS 13687 standard. |
| KR-1500 | White | MANTO KRAFT DECO | White cement-based, single-component, polymer-modified, trowel-applied decorative exterior coating with a variety of mineral textures. |

Exterior Insulation Systems Product Standards

TS 13566: Cement-based adhesive – For thermal insulation

TS 13687: Cement-based plaster – For thermal insulation boards

MANTO KRAFT



KR-404



gri

25 ^{±2} Kg

MANTO KRAFT THERMAL INSULATION BOARD ADHESIVE

Cement-based, polymer-modified, high-performance, and flexible adhesive mortar specially formulated for thermal insulation boards.

TS 13566: Cement-Based Adhesive – For Thermal Insulation

Cement-Based Polymer-Modified Board Adhesive

MANTO KRAFT

ISI YALITIM LEVHA YAPIŞTIRICI

Application Areas

- Used for bonding polystyrene thermal insulation boards (XPS, EPS, decorative moldings, etc.) to surfaces such as brick, aerated concrete, plaster, and exposed concrete.
- Should not be applied to unstable or low-strength surfaces.
- Avoid application in excessively humid or extremely hot weather, under direct sunlight.
- Do not apply on frozen surfaces, melting surfaces, or areas at risk of freezing within 24 hours.

Fields of Application

- Suitable for both interior and exterior use.
- Used for bonding thermal insulation boards such as EPS, XPS, mineral wool, and polyurethane boards.

Advantages

- Easy to apply, provides excellent adhesion.
- Water and frost resistant.
- Flexible.
- Offers high stability, does not sag or crack.

Surface Preparation

- Ensure that the application surface is fully cured.
- The surface must be free from dust, oil, tar, bitumen, paint, silicone, curing agents, detergents, and form-release oils that may prevent adhesion.
- The surface should be moistened and kept damp.

Mortar Preparation

- Mix 25 kg of **KRAFTBAU MANTO KRAFT THERMAL INSULATION BOARD ADHESIVE** with approximately 5.5 - 6.5 liters of clean water, preferably using a low-speed mixer, until a lump-free consistency is achieved.
- Let the prepared mixture rest for 5 - 10 minutes, then mix again for 1 - 2 minutes before use.
- The prepared adhesive must be used within 2 hours.

Application Details

- Pot life: Maximum 2 hours.
- Application thickness: 4 mm.

Technical Specifications

| | |
|--------------------------|-------------------------------------|
| Appearance | Fine grey powder |
| Bulk Density | ~ 1.50 kg/lt |
| Water Mixing Ratio | 5.5 - 6.5 lt water / 25 kg powder |
| Resting Time | 5 - 10 minutes |
| Pot Life | 2 hours |
| Skim Time | 15 minutes |
| Anchoring | At least 24 hours after application |
| Plaster Application Time | 1 - 2 days after |
| Application Temperature | +5°C - +35°C |

Consumption

4-5 kg/m² (Varies depending on the application method).

Application Information

Application Methods Based on Surface Preparation:

- Full Surface Bonding Method: **MANTO KRAFT THERMAL INSULATION BOARD ADHESIVE** is applied to the entire surface of the thermal insulation board using a smooth or notched trowel.
- Strip and Spot Application Method: The adhesive is applied in strips along the edges of the board, with additional spots in the middle.
- During application, a leveling guide should be used, and boards should be firmly pressed to ensure proper adhesion.
- After 24 hours, mechanical dowels should be used for additional support.

Precautions

- Do not apply at temperatures below +5°C or above +35°C.

- Avoid application on frozen surfaces, surfaces at risk of freezing, or areas exposed to direct sunlight or strong winds.
- Do not add water or powder to expired mortar.
- Thermal insulation boards should be placed with minimal gaps between them.
- Damaged or deteriorated boards should not be used.

Warnings

- Do not add any additional materials (lime, cement, gypsum, etc.) to the mortar.
- Expired mortar should not be reused.
- Avoid application on hot or frozen surfaces.
- Not suitable for application on wood, metal, or damp surfaces.
- A primer must be used before applying on surfaces such as gypsum board.
- Follow the surface preparation and usage instructions.
- Avoid inhaling the product. In case of eye contact, rinse thoroughly with water and seek medical advice if necessary.
- As a cement-based product, gloves should be worn during application.
- Do not store in humid environments.

Packaging and Storage

25 kg'lık kraft torbalarda, paletli sevk edilir. Palet ölçüsü: 115 x 115 cm.

Orijinal ambalajında en fazla 10 kat istiflenerek, kuru ve nemsiz bir ortamda 8 ay süreyle saklanmalıdır. Torba açıldıktan sonra 7 gün içerisinde tüketilmesi önerilir.



MANTO KRAFT



KR-405



gri

25 ^{±2} Kg

MANTO KRAFT THERMAL INSULATION BOARD PLASTER

Cement-based, polymer-modified, water-repellent external thermal insulation plaster compliant with TS 13687 standard.

TS 13687: Cement-Based Plaster – For Thermal Insulation
TSE EN 998-1: Masonry Mortar – Specifications – Part 1: Suitable for base coat and finishing coat mortar classification

Cement-Based, Polymer-Modified Board Plaster Mortar

MANTO KRAFT ISI YALITIM LEVHA SIVASI

Application Areas

- ▶ **Interior and Exterior Facades:** Suitable for both indoor and outdoor applications.
- ▶ **Ceilings and Walls:** Can be applied on ceilings and walls.
- ▶ **Thermal Insulation Systems:** Used as a reinforcing plaster in thermal insulation systems.
- ▶ **Reinforcement of Worn Facades:** Ideal for reinforcing aging and damaged plaster surfaces.

Features

- ▶ **Plastic Consistency:** Easy to apply due to its elastic consistency.
- ▶ **Crack-Free Drying:** Dries without cracking.
- ▶ **Excellent Vapor Permeability:** As a cement-based product, it offers outstanding water vapor permeability.
- ▶ **Foundation for Decorative Plasters:** Serves as a long-lasting and safe substrate for all types of new coarse and fine plasters.
- ▶ **Fire Resistant:** Non-combustible.

Pre-Application Preparation

Ensure that the insulation boards are properly fixed and level, with no gaps between the boards.

Application Instructions

- ▶ **Mix:** Mix **KRAFTBAU MANTO KRAFT THERMAL INSULATION BOARD PLASTER** with 5-5.5 liters of clean water using a low-speed mixer until a lump-free mixture is obtained (minimum mixing time: 5 minutes). Let the mixture rest for 3 minutes, then mix again for 2 minutes.
- ▶ **Usage Time:** The fresh mixture should be used within 20 - 25 minutes.
- ▶ **Application Technique:** Apply the plaster using a trowel with a 10 mm notched trowel. Embed the mesh into the freshly applied plaster, overlapping the joints by approximately 10 cm.

- ▶ **Finishing:** Cover the mesh with **KRAFTBAU MAN-TO KRAFT THERMAL INSULATION BOARD PLASTER**, ensuring it is embedded in the surface, and smooth with a flat steel trowel.
- ▶ **Thickness:** The plaster should be applied at a maximum thickness of 5 mm.
- ▶ For repairing old facades, apply the plaster with or without mesh at a thickness of approximately 6 - 7 mm before painting.
- ▶ **Continuous Application:** For large surfaces, ensure enough personnel are available for uninterrupted application.
- ▶ **Sealing Joints:** Leave the ends clean at required finish points and continue from the joint later.
- ▶ **Avoid Reusing Dried Mixture:** Do not add water or dry plaster to a mixture that has already dried in the container.

Post-Application Care

- ▶ Protect newly plastered surfaces from direct sunlight, strong drafts, high temperatures (over +35°C), rain, and frost for the first few days.
- ▶ Any additional work on the plastered surface should be done only after the plaster has completely dried and reached its maximum durability, typically 3 to 7 days depending on the ambient temperature.

Consumption

- ▶ For application over insulation boards at a thickness of 4 - 5 mm, approximately 4 - 5 kg/m² is needed.
- ▶ The consumption values are theoretical; it's recommended to perform a sample application before starting.

Packaging

Available in 25 kg kraft bags, with 64 bags (1600 kg/pallet) on one pallet.



Storage

- ▶ Store dry plaster bags away from water, frost, and harsh weather conditions.
- ▶ Keep on wooden pallets in a cool, dry, and moisture-free environment between +10°C and +25°C.
- ▶ Any opened or damaged bags should be sealed immediately and used first.
- ▶ A maximum of 8 bags can be stacked on top of each other. If stored under the conditions mentioned above, the shelf life is a maximum of 12 months.



MANTO KRAFT



KR-1500



beyaz

25 ^{±%2} Kg

MANTO KRAFT DECO

White cement-based, single-component, polymer-modified, trowel-applied decorative exterior coating with a variety of mineral textures.

TSE EN 998-1: Masonry Mortar – Base and Finishing Plaster

TS 7847: Paints and Plasters – Masonry and Concrete Exterior Coating

TS EN 1062-1: Coating Materials and Systems for Masonry and Concrete Facades

MANTO KRAFT DECO

The following values are classified according to **TS EN 1062-1**.

| | |
|-------------------------------|----|
| Dry Film Thickness | E5 |
| Grain Size | S4 |
| Water Vapor Transmission Rate | V1 |
| Water Absorption Rate | W2 |
| Crack Bridging Ability | A0 |
| Carbon Dioxide Permeability | C0 |
| Mold Resistance | K2 |

Application Areas

- Used as a final decorative plaster in thermal insulation systems.
- Suitable for plaster repairs and exterior granular plaster applications.
- Ideal for interior and exterior surfaces, including ceiling and wall applications.
- Can be applied directly to brick, aerated concrete, and pumice blocks.

Technical Specifications

| | |
|-------------------------|---|
| Appearance | White-colored granules |
| Water Mixing Ratio | 5 - 5.5 lt of water / 25 kg of powder |
| Resting Time | 5 minutes |
| Pot Life | 1.5 - 2 hours |
| Application Temperature | between +5°C and +35°C |
| Application Thickness | ~ 3 mm |
| Full Drying Time | 1 - 2 days |
| Consumption | 2.4 - 3 kg/m ² (varies depending on the surface) |

Surface Preparation

- ▶ The surface and insulation boards must be solid and free of dust, oil, tar, paint, silicone, curing agents, detergents, or mold release oils that could prevent adhesion.
- ▶ Before application, apply **KRAFTBAU DECO DECORATIVE PLASTER PRIMER** with a brush or roller.

Mixing the Mortar

- ▶ Add 25 kg of **KRAFTBAU MANTO KRAFT DECO** to 5 - 5.5 liters of clean water and mix with a low-speed mixer until lump-free.
- ▶ Allow the mixture to rest for 5 minutes, then remix for 1 - 2 minutes before using.
- ▶ The mixture should be used within 1.5 - 2 hours.

Application Information

- ▶ Decide the direction of the texture pattern and trowel accordingly.
- ▶ Adjust the application thickness based on the largest aggregate size.
- ▶ Create the texture within 20 minutes using vertical or circular movements with a plastic trowel.
- ▶ If the temperature is high, moisten the surface until the cement sets to prevent cracking.

Precautions

- ▶ Avoid application at temperatures below +5°C or above +35°C.
- ▶ Apply without interruption, or divide the surface into sections of approximately 20 m².
- ▶ Start the plastic trowel application within 20 minutes to avoid film formation on the plaster surface.
- ▶ Avoid applying in areas exposed to direct sun, wind, or risk of freezing within 24 hours.
- ▶ If heavy cold or snow is expected within one week, take protective measures or avoid application.
- ▶ Do not add water or powder to expired mortar.

Packaging

Available in 25 kg kraft bags.

Shelf Life

Can be stored for up to 12 months in unopened packaging in dry conditions.





TECHNICAL PRODUCTS



Teknik Ürünler

| Kod | Ürün | Açıklama |
|-----------------|---|---|
| KR-500 White | KRAFT SÖVE TAMİR & YAPIŞTIRICI | Cement-based, polymer-modified adhesive mortar used for bonding EPS and XPS-based decorative elements, cornices, and ceiling medallions to interior and exterior surfaces. |
| KR-5100 | TECHNO KRAFT ÇİFT BİLEŞENLİ İZOLASYON HARCİ | Çimento esaslı toz bileşen ve polimer emülsiyon esaslı sıvı bileşenlerden oluşan, son kat kaplama malzemesinden önce uygulanabilen elastik su yalıtım malzemesidir. |
| KR-7500 | TECHNO KRAFT DOLGULU ASTAR | TS 13744 standardına uygun, emülsiyon polimer esaslı dolgulu bir astardır. Seramik üstüne seramik yapıştırma işlemlerinde yüzey pürüzleştirici olarak kullanılır. |
| KR-7000 | TECHNO KRAFT BRÜT BETON ASTARI | Akrilik dispersiyon esaslı (polimer modifiyeli) tek bileşenli. TS 13744 standardına uygundur. Akrilik dispersiyon esaslı (polimer modifiyeli) tek bileşenli. Özellikle brüt beton yüzeyler ile duvar üzeri alçı ve çimento esaslı sıvalarda kullanılır. Yüzey aderansını artırır, çalışma süresini ve işlenebilirliği geliştirir. |

KR-500



beyaz

25 ^{±2} Kg

KRAFT MOLDING REPAIR & ADHESIVE

Cement-based, polymer-modified adhesive mortar used for bonding EPS and XPS-based decorative elements, cornices, and ceiling medallions to interior and exterior surfaces.

TS-EN 1504-3: Products and systems for the protection and repair of concrete structures

Part 3: Structural and non-structural repair, complies with R4 class.

KRAFT SÖVE TAMİR & YAPIŞTIRICI

Application Areas

Used for bonding polystyrene insulation boards (XPS: Extruded Polystyrene or EPS: Expanded Polystyrene) and products like moldings, gypsum ornaments, window sills, facade bands, and ceiling medallions to surfaces such as brick, aerated concrete, plaster, and raw concrete.

Advantages

- ▶ Single-component, easy to prepare and apply.
- ▶ Extended working time due to its high water retention.
- ▶ High bonding strength.
- ▶ Fine-grained texture allows use as molding repair mortar and joint filler for moldings.

Technical Specifications

Specified for 23°C (±2°C) and 55% (±5%) relative humidity conditions.

| | |
|-----------------------|------------------------------|
| Appearance | White |
| Powder density | 1.6 kg/m ³ (±0.1) |
| Water mixing ratio | 5-5.5 lt of water / 25 kg |
| Resting time | 5-10 minutes |
| Pot life | Approximately 2 hours |
| Application thickness | 4 mm |
| Fire reaction class | A1 |

Surface Preparation

- ▶ The surface should be clean, dry, smooth, and solid.
- ▶ Highly porous surfaces should be wetted and allowed to reach moisture saturation.
- ▶ Significant surface defects must be repaired with **KRAFTBAU REPAIR MORTAR** at least 24 hours before the molding adhesive application.
- ▶ Ensure that the application surface has cured properly.
- ▶ The surface should be free from paint or old plaster that could hinder adhesion and must be level.

Instructions For Use

One bag (25 kg) of **KRAFTBAU MOLDING REPAIR & ADHESIVE** is slowly added to 5-5.5 liters of clean water and mixed with a low-speed mixer until a lump-free, homogeneous mixture is obtained. The mortar is left to rest for 5 minutes and then mixed again for 1-2 minutes. The adhesive should be applied to the molding using a steel trowel. The adhesive is spread around the edges of the molding, leaving a 5 mm gap. The molding is pressed onto the surface and tapped lightly with a rubber mallet to ensure full adhesion.

Application Details

- ▶ Working time of the prepared mixture: Maximum 2 hours.
- ▶ Application thickness: 4 mm.

Consumption:

4-5 kg/m² (Varies depending on the application method).

Warnings

- ▶ No materials (such as lime, cement, plaster, etc.) should be added to the prepared mixture.
- ▶ Expired mixtures should not be mixed with water or dry mixture for reuse.
- ▶ Do not apply to surfaces that have been exposed to direct sunlight for long periods, extremely hot, or frozen surfaces.
- ▶ Not suitable for application on wood, metal surfaces, or surfaces exposed to moisture.
- ▶ An adhesion-promoting primer must be used on surfaces like gypsum boards, gypsum plaster, and gypsum blocks.
- ▶ Do not deviate from the specified application surface and usage instructions.
- ▶ Avoid inhalation; in case of eye contact, wash thoroughly with water and consult a doctor if necessary.
- ▶ Since it is a cement-based material, gloves should be worn during application.
- ▶ Packaged products should not be stored in damp environments.

Packaging and Storage

Available in 25 kg kraft bags, with 64 bags per pallet (1600 kg/pallet). Pallet dimensions: 115 x 115 cm.

Should be stacked up to a maximum of 10 layers in its original packaging and stored in a dry, moisture-free environment for up to 8 months. Once opened, it is recommended to use the product within 7 days.



KR-5100



A COMPONENT

20 ± 2 Kg

**B COMPONENT
SEMI-ELASTIC INSULATION**

KR-5100-1

6,5 ± 2 Kg



**B COMPONENT
FULL ELASTIC INSULATION**

KR-5100-2

10 ± 2 Kg



TECHNO KRAFT ÇİFT BİLEŞENLİ İZOLASYON HARCI

TECHNO KRAFT TWO-COMPONENT INSULATION MORTAR

A cement-based, high-performance ready-mix mortar with reduced slip properties and extended open time, used for bonding porcelain and granite ceramic materials, with enhanced additional features.

TS EN 14891: Liquid Applied Waterproofing Products for Use Under Ceramic Tiles Fixed with Adhesives; complies with requirements, conformity assessment, classification, and labelling standards, and is suitable for CMP class.

CMP: Normal cement-based, liquid-applied, chlorine-resistant waterproofing product.

Application Areas

Used in all structures, especially in wet areas such as balconies, bathrooms, toilets, and kitchens. Serves as a waterproofing material beneath ceramics in swimming pools.

Advantages

- Can be applied against positive water pressure.
- Suitable for horizontal and vertical surfaces.
- Safe to use in wet areas, ornamental ponds, and swimming pools.
- Can be covered with materials like ceramics.
- Easy and comfortable to apply.
- Can be applied to surfaces like concrete, plaster, and screed for waterproofing.

Surface Preparation

The surface to be applied must be solid, clean, and dust-free. Ensure the surface is free from release agents, paint, and dust. Remove protruding pieces

(iron, wood, etc.) and cover the areas with suitable **KRAFTBAU Repair Mortars**. The surface should be moistened before application.

Mortar Preparation

The liquid component is placed in a mixing container with 20 kg of powder. The entire bag is poured, and the mixture is blended with a hand mixer until no lumps remain. The prepared mortar should rest for 5 minutes and then be mixed again.

Technical Values

| | |
|---|----------------------------------|
| Water Vapor Permeability | Class I |
| Adhesion Strength by Pull-off | Without traffic load /Flexible |
| Fire Reaction Class | E |
| Bond Strength | $\geq 1 \text{ N/mm}^2$ |
| Capillary Water Absorption and Water Permeability | Max 0.1 (kg/m ² h0.5) |
| Crack Bridging | > 0.75 mm |
| Consumption (for a single coat) | 1.5-2.0 kg/m ² |

Application Information

Very porous surfaces like rough concrete and cement-based plaster should be wetted with clean water, and the surface should be kept moist until the water layer disappears. The fluid mortar is applied using a brush or roller. The second coat should be applied at least 6 hours after the first coat and perpendicular to it. For the final coat (ceramics, screed, and cement-based plaster), a waiting period of 3 days

is required. Care should be taken not to damage the waterproofing material mechanically during the covering process.

Warnings

- ▶ No foreign materials (lime, cement, gypsum, water, etc.) should be added other than the two components.
- ▶ Continuous mixing of the product during application is recommended.
- ▶ Mortar that has exceeded its usage period should not be mixed with water, liquid component, or dry mortar for reuse.
- ▶ Application is recommended to be done between +5°C and +35°C.
- ▶ Protect **TECHNO KRAFT Dual-Component Elastic Waterproofing Mortar** from sun, wind, rain, and frost during the first 24 hours after application.
- ▶ Achieves final strength within 14 days.

Packaging and Storage

The Component A is supplied in a 20 kg kraft bag, while Component B is provided as a liquid component in a plastic container.

The shelf life is one year, indicating that the product should be stored in a dry environment without the risk of freezing, and it should remain unopened. It is recommended to consume within 1 week after opening the package. The liquid component freezes at temperatures below 0°C.



KR-7500



5^{±%2}
Kg



2,5^{±%2}
Kg

TECHNO KRAFT FILLED PRIMER

*Compliant with TS 13744,
this emulsion-polymer-based
filled primer is used as
a surface roughener for
tile-over-tile applications.*

TECHNO KRAFT DOLGULU ASTAR

Specifications

- Packaging: 2.5 kg / 5 kg
- Type/Color: Liquid / Green
- Application temperature: Between +5 °C and +30 °C
- Drying time: 45-60 minutes
- Waiting time after application: 24 hours
- Consumption: 100-300 g/m² per coat

Application

Ensure that surfaces are clean, solid, and free of residues that could prevent adhesion. After thorough mixing, apply **KRAFTBAU TECHNO KRAFT FILLED PRIMER** with a brush or roller. For highly absorbent surfaces, a double coat is recommended.

Packaging and Storage

Store in a dry, cool environment in its original, unopened packaging, protected from freezing. When properly stored, shelf life is 12 months from the production date. Seal opened packages tightly.

Safety Precautions

- Storage areas should be well-ventilated.
- During application, use appropriate eye protection, gloves, a mask, and work clothing.
- In case of contact with skin or eyes, wash with plenty of water and soap.
- If ingested, seek medical assistance immediately.



TECHNO KRAFT



KR-7000



12^{±%2}
Kg

TECHNO KRAFT BARE CONCRETE PRIMER

Acrylic dispersion-based (polymer-modified) single-component. It is especially used on raw concrete surfaces as well as plaster and cement-based plasters on walls. It enhances surface adhesion, improves working time, and increases workability.

Complies with TS 13744 standard.

TECHNO KRAFT BRÜT BETON ASTARI

Surface Preparation

Before application, all substances that may weaken adhesion, such as oil, grease, rust, and paraffin residues, must be removed, and the surface should be free of loose particles.

Primer Application

Dilute the product to the desired consistency with approximately 30% water and mix for 3-5 minutes until a smooth, lump-free mixture is achieved. Apply a single coat to the prepared surface with a roller. Stir the product periodically during application.

Consumption

4-7 m²/kg (depending on the surface, in a single coat).

Packaging and Storage

Store the product in its unopened, original packaging in a cool, dry environment, protected from freezing. Under proper storage conditions, the shelf life is 12 months from the production date. Reseal opened packages tightly.

Safety Precautions

Ensure storage areas are well-ventilated. During application, wear appropriate protective eyewear, gloves, masks, and work clothing. In case of skin or eye contact, rinse immediately with plenty of water and soap; if ingested, seek medical assistance immediately.



TECHNO KRAFT



SELECTED PRODUCT



25 ^{±2} Kg



TECHNO KRAFT

PRODUCT LIST

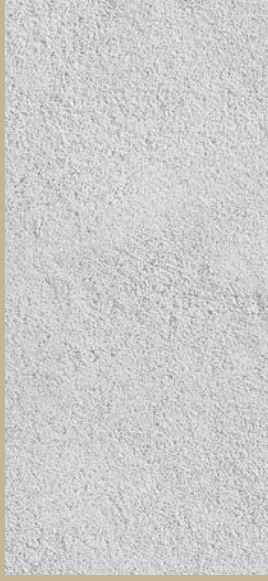
- ▶ **TECHNO KRAFT REPAIR MORTAR**
Fine / Coarse (25 kg)
 - ▶ **TECHNO KRAFT READY-MIXED PLASTER**
(25 kg)
 - ▶ **TECHNO KRAFT MACHINE PLASTER** (25 kg)
 - ▶ **TECHNO KRAFT AAC BONDING MORTAR**
(25 kg)
 - ▶ **TECHNO KRAFT GROUT MORTAR** (25 kg)
 - ▶ **TECHNO KRAFT SURFACE HARDENER**
Red / Grey (25 kg)
 - ▶ **TECHNO KRAFT LEVELING PLASTER** (25 kg)
 - ▶ **TECHNO KRAFT SATIN FINISH PLASTER**
(25 kg)
 - ▶ **TECHNO CRYSTALLINE WATERPROOFING MORTAR** (25 kg)
 - ▶ **TECHNO KRAFT RIDGE MORTAR**
Anthracite / Red (25 kg)
 - ▶ **TECHNO GLASS MOSAIC BONDING MORTAR** (25 kg)
 - ▶ **TECHNO KRAFT RAPID ADHESIVE** (25 kg)
-
- ▶ **TECHNO KRAFT ACRYLIC-BASED ADHESION-BOOSTING PRIMER** (5 kg kova)
 - ▶ **TECHNO KRAFT PRIMER** (1 kg ve 5 kg kova)



KraftBau®

Yapıların Gizli Gücü

kraftbau.com.tr



Yapıların Gizli Gücü



KraftBau®
Yapıların Gizli Gücü

Varlık Mineral Geothermal Energy Mining Construction Trade Inc.

Head Office: Beştepe Mah. No:1/113 Yenimahalle/Ankara/Türkiye

Antalya Factory: Çıplaklı Mah. 2171. Cd. No:14
Döşemealtı/Antalya/Türkiye

E-mail: info@kraftbau.com.tr

☎ 444 6 190

kraftbau.com.tr