

# Expansion Tape

Thermoplastic expansion tape for waterproofing joints with excellent swelling capabilities.

## Application

Dimensionally stable; swelling process is infinitely often repeatable, often reversible; suitable for freshwater.

Expansion tape is used for inside waterproofing of working joints in concrete, which are exposed to permanent or temporary loads to ground water, run-off water and/or surface water.

---

VARLIK MİNERAL JEOTERMAL ENERJİ MADEN İNŞ. TİC. A.Ş.

MERKEZ: Beştepe Mah.No:1/113 Yenimahalle/Ankara

ANTALYA FABRİKA: Çıplaklı Mah. 22171 Cd. No:14 Döşemaltı/Antalya

E-MAIL: [info@kraftbau.com.tr](mailto:info@kraftbau.com.tr)

TEL: 444 6 190

Kraftbau.com.tr

## Technical Data

Colour	blue
Format	square profile
Dimensions	5 x 20 mm

	DIN / Test Condition	Value
Density	-	approx 1,22 g/cm <sup>3</sup>
Swelling capacity	7 d stored in distilled water 42 d stored under alkaline conditions 21 d stored under acidic conditions	500 % 333 % 243 %
Swelling pressure	-	approx. 1,30 N/mm <sup>2</sup>
Fire classification	according to DIN 4102-1	B 2
Water impermeability after installation: Joint width: 0,25 mm	-	2,0 bar
Toxicity	-	none

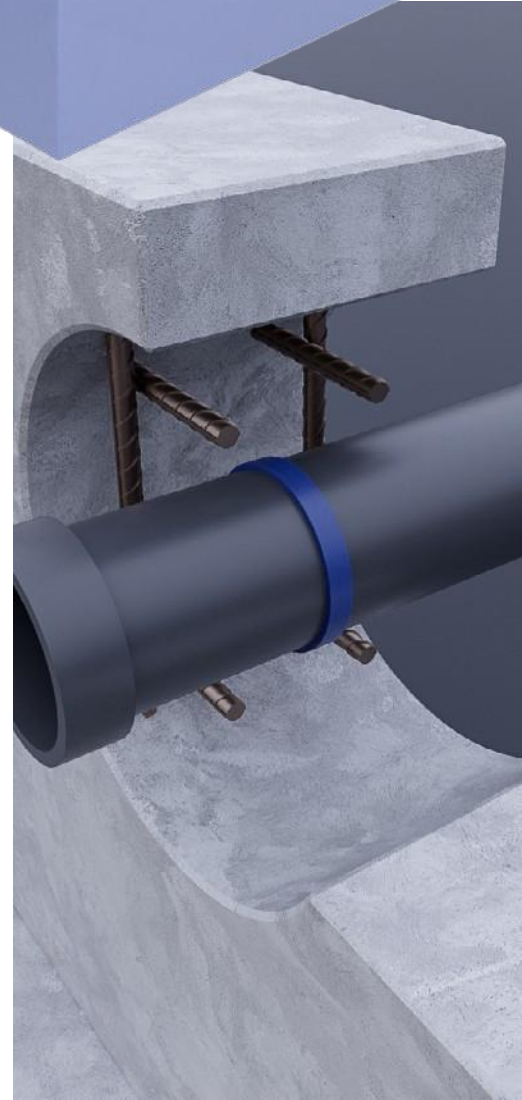
**Chemical Properties:** Resistance against several chemicals, but we advise to be careful with aromatic oils and fuels, with vegetal oils and strong aromatic solvents.

Certified according to	DIN EN ISO 9001: 2015 Made in Europe.
Gewährleistung	5 years warranty for the guaranteed product qualities.
Storage	Maximum of 24 months – it is essential that goods are kept in the original packaging, keep frost free and dry, protect against sunlight and weathering.
Advice	The expansion tape must be stored dry. Make sure that the tape lies flat and planar on the concrete, without any contamination beneath the expansion tape. Before concreting protect the expansion tape from moisture and inspect the expansion tape visually. Very swollen expansion tapes are not suitable and must be removed. Expansion tapes are unsuitable for movement joints. The expansion tape must be covered by 10,0 cm concrete.

## Material composition

Modified thermoplastic  
elastomers

## Applications



VARLIK MİNERAL JEOTERMAL ENERJİ MADEN İNŞ. TİC. A.Ş.

MERKEZ: Beştepe Mah.No:1/113 Yenimahalle/Ankara

ANTALYA FABRİKA: Çıplaklı Mah. 22171 Cd. No:14 Döşemaltı/Antalya

E-MAIL: [info@kraftbau.com.tr](mailto:info@kraftbau.com.tr)

TEL: 444 6 190

Kraftbau.com.tr

## Application

The substrate must be sustainable, mostly flat and a closed surface texture. It is essential that it is free from gravel pockets, cavities, gaping cracks, dust and be free from adhesion inhibiting substances. Sintering layers are to be removed by mechanical abrasion if necessary. During the application of expansion tape the substrate may be matt damp, but puddles of water must be avoided.

Mechanical fixation is recommended with fixing glue.

The product can be adhered to concrete, steel and PVC pipe penetrations with glue.



Alternatively, the swelling tape is fixed by nailing at approx. 150 mm centres.



Material transfers are done with an overlap area of at least 50 mm.

